

# WISBROEK SOFTBILL DIET | SMALL & LARGE

## SUITABLE FOR:



### SMALL

tangaras, honeyguides, pittas, broadbill, manakins, starlings, birds of paradise, flycatchers and doves.

### LARGE

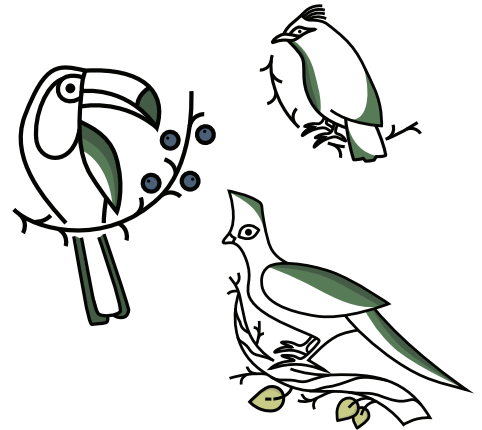
turacos, toucans, aracarís, hornbills, cotingas, starlings, trogons, oropendolas, birds of paradise and doves.

Wisbroek Softbill Diet is a complementary food for fruit-eating birds, in addition to their daily portion of fruit. During the unique extrusion process, the high diversity of raw materials is formed under high pressure into delicious crunchy pellets in the sizes Small and Large. Each pellet contains all the nutrients your bird needs to stay in good condition. In addition to their daily portion of fruit, the birds do not need any additions.

This balanced recipe contains an iron content lower than 85 ppm. We can guarantee this, because each batch is analyzed by an external laboratory. The iron content of the batch number on your package can be found at [www.wisbroek.com](http://www.wisbroek.com).

Our pellets incorporate raw materials such as alfalfa, carrots, red beets, spirulina, corn and corn gluten. These contain natural carotenoids, which are bodily substances that birds would also eat in the wild. These ensure that the true natural colors of your birds come out.

In addition to all these healthy nutrients, all the necessary fatty acids, amino acids, vitamins, minerals and other essential nutrients are also derived from animal and plant protein sources of only the highest quality. These ingredients help to support your bird's immune system. As a prebiotic, for example, we have added lactose from milk powder, which keeps the intestines healthy.



Order direct from our website



SMALL



LARGE

## FEEDING ADVICE

Our Softbill Diet may be given to fruit-eating birds without restriction, in addition to their daily portion of fresh fruit.

Diversity is also important in the supply of fruit. Combine with different carbohydrates, for example grapes, mango or blueberries. For a sick bird, banana, for example, can be a good extra.

## SWITCHING ADVICE

Are Wisbroek Softbill Diet pellets new to your bird? Then let him get used to it by mixing the pellets through the fruit. In addition, give a separate bowl with only Softbill Diet. Here it is important to take the moisture level into account. For example, 100 grams of fruit contains about 85 grams of water. A portion of 100 grams of pellets, on the other hand, contains only 8 grams of water.

### ANALYTICAL CONSTITUENTS

Crude protein 22%

Crude fat 8%

### ADDITIVES - COLOURANTS

B-carotene 7,5 mg/kg



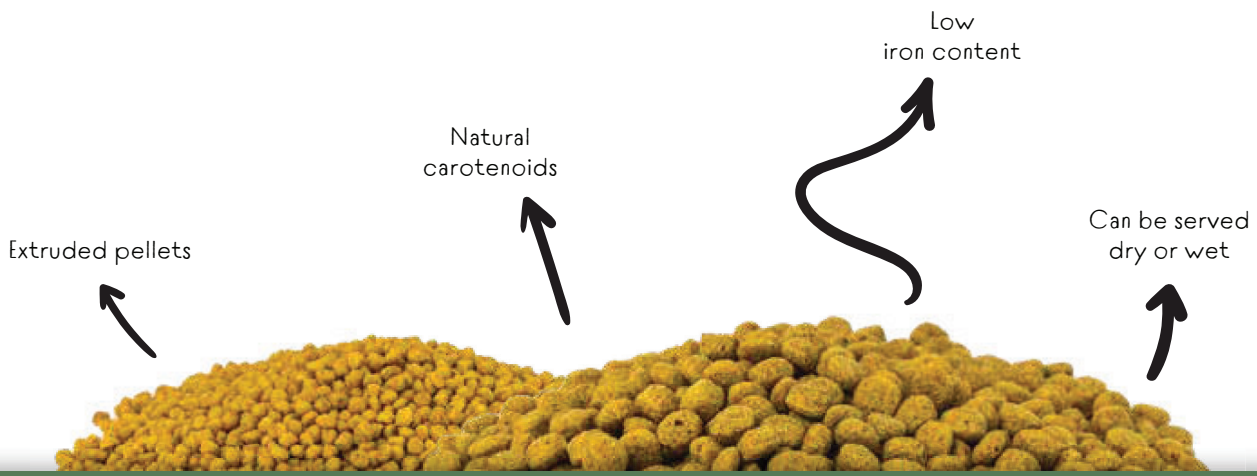
HIGH DIVERSITY



NATURAL INGREDIENTS



GMO FREE



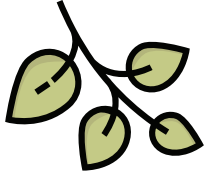
NL-240311

Store in a cool, dry and dark place

Make sure the bird always has fresh water available.

Not suitable for human consumption, for animals only.

Contact us for personal advice



# SMALL

## COMPOSITION

Maize flour, wheat germs, rice, maize gluten, egg powder, dextrose, brewer's yeast, wheat middlings, wheat flour, sunflower oil, curcuma, carrots.

## ANALYTICAL CONSTITUENTS

Crude Protein	21,5%
Crude Fat	8,0%
Crude Fibre	2,2%
Ash	5,7%
Phosphorus	0,8%
Calcium	1,1%
Sodium	0,2%
Methionine	0,6%
Lysine	1,3%

## ADDITIVES

<b>Vitamins</b>	
Vitamin A	10.000 IE/kg
Vitamin D3	1.000 IE/kg
Vitamin E $\alpha$ -tocopherol	250 mg/kg
Vitamin C (Stable)	50 mg/kg
<b>Colourants</b>	
$\beta$ -Carotene	10,0 mg/kg
Canthaxanthin	2,5 mg/kg
<b>Trace elements</b>	
Iron (ferrous sulphate, monohydrate)	2,0 mg/kg
Iodine (calcium iodate, anhydrous)	15,0 mg/kg
Copper (copper sulphate, pentahydrate)	85,0 mg/kg
Manganese (manganese oxide)	70,0 mg/kg
Zinc (zinc sulphate, monohydrate)	0,3 mg/kg

# LARGE

## COMPOSITION

Maize flour, wheat germs, rice, maize gluten, egg powder, dextrose, brewer's yeast, wheat middlings, wheat flour, sunflower oil, curcuma, carrots.

## ANALYTICAL CONSTITUENTS

Crude Protein	21,5%
Crude Fat	8,0%
Crude Fibre	2,2%
Ash	5,7%
Fosfor	0,8%
Phosphorus	1,1%
Sodium	0,2%
Methionine	0,6%
Lysine	1,3%

## ADDITIVES

<b>Vitamins</b>	
Vitamin A	10.000 IE/kg
Vitamin D3	1.000 IE/kg
Vitamin E $\alpha$ -tocopherol	250 mg/kg
Vitamin C (Stable)	50 mg/kg
<b>Colourants</b>	
$\beta$ -carotene	10,0 mg/kg
Canthaxanthine	2,5 mg/kg
<b>Trace elements</b>	
Iron (ferrous sulphate, monohydrate)	2,0 mg/kg
Iodine (calcium iodate, anhydrous)	15,0 mg/kg
Copper (copper sulphate, pentahydrate)	85,0 mg/kg
Manganese (manganese oxide)	70,0 mg/kg
Zinc (zinc sulphate, monohydrate)	0,3 mg/kg

*Disclaimer: Wisbroek is continuously working on an optimal composition of the various feed types. Mentioned values may therefore deviate from the actual product. See the label on the package for the exact composition.*

